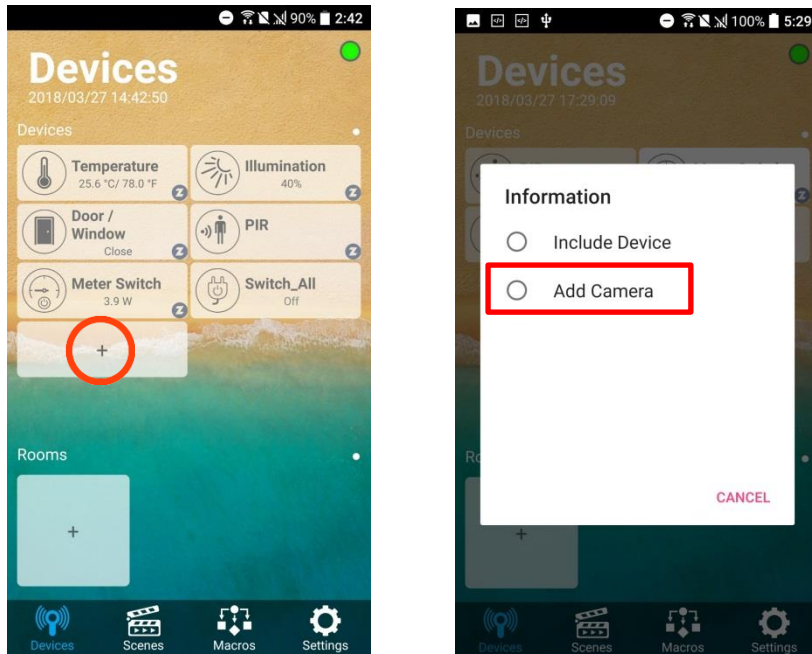


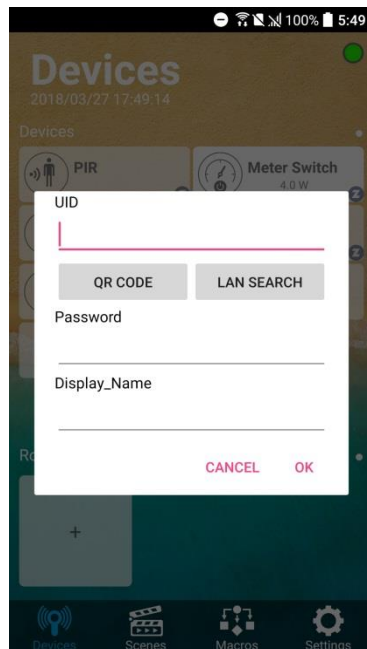
Q: How to add AirLive Smart Cube SC-300W to AirLive Smart Home IoT SmartLife Plus APP

A: First make sure your Smartcube camera is connected to Internet (see QIG of Smartcube). After this you can add the camera to the Gateway and APP (the Gateway and App must also be connected to Internet).

To add the camera to the APP, Start up the APP and go to the “DEVICES” page and click the “+” icon.



2. Select QR Code or do Lan Search to add the Camera



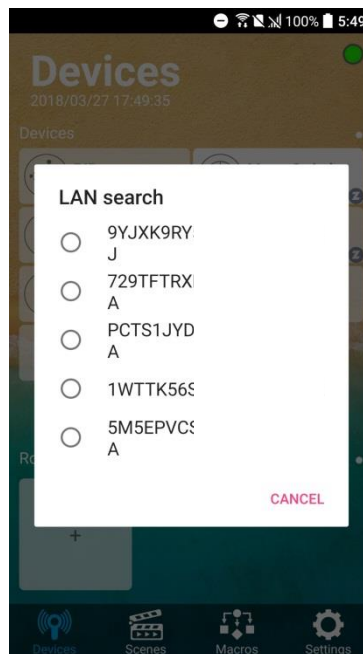
3. Scan the QR code.

For the QR Code please scan the QR code on the back of the Camera.



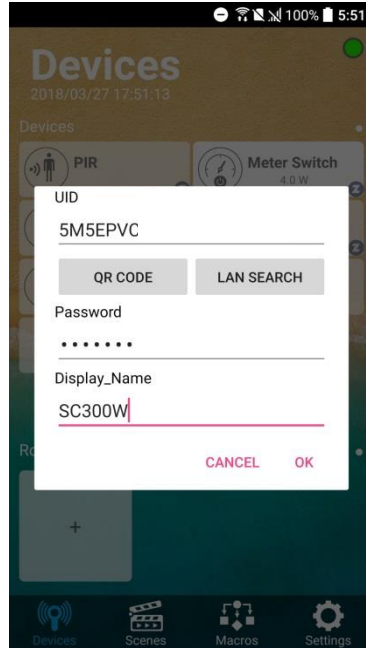
4. Lan Search.

If scanning the QR code does not work, then press Lan Search to find your camera on the list. Please make sure the Smart Phone is in **the same** network as the Camera when doing Lan Search else no Camera will be found. The default login for the Camera is admin and password airlive



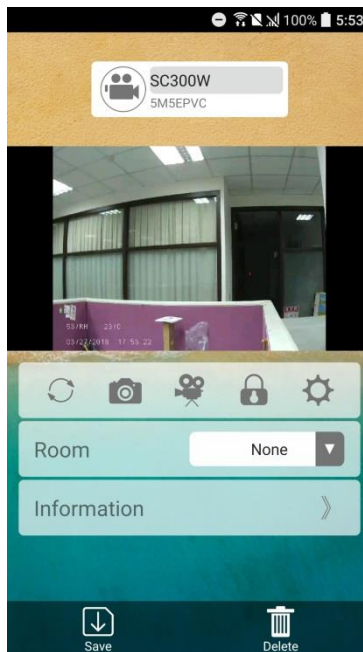
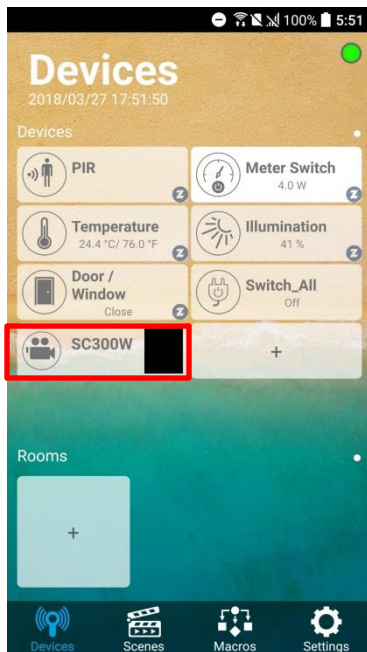
5. Key in the Password.

Key in camera's password and display name to field. The default password is "airlive". Note: Display name you can input you desired name for the Camera.



6. Add Successful and Live View.

After successful adding of the Camera the Camera Icon will appear in the APP. You can now click the Camera icon and the Live view from the Camera will be shown.



- Refresh Streaming
- Snapshot
- Recording Video
- Key in password
- Change Video Quality and Change Password
- Delete camera