

Quick Installation Guide  
Ceiling and inWall Access Point

TOP-30AX-1G  
TOP-30AX-2.5G  
TOP-18AX  
TOP-12AC  
inWall-U618AX  
inWall-U630AX

1/Product introduction

Ceiling Access Point

• LED indicator instructions

Front		Back	
One LED Indicator	Name	Normal Status	Instruction
	System Light/WIFI	Green Light	System boots up successfully
		Blue light	WIFI boots up successfully
Thress LED Indicator	Name	Normal Status	Instruction
	System Light	Bright	System boots up successfully
		Flashing	System reset default
	2.4G Light	Flashing	2.4G Wireless boots up successfully
		Flashing	5.8G Wireless boots up successfully

\*The number of LEDs for different models of ceiling mount AP will be different, please refer to the actual product.

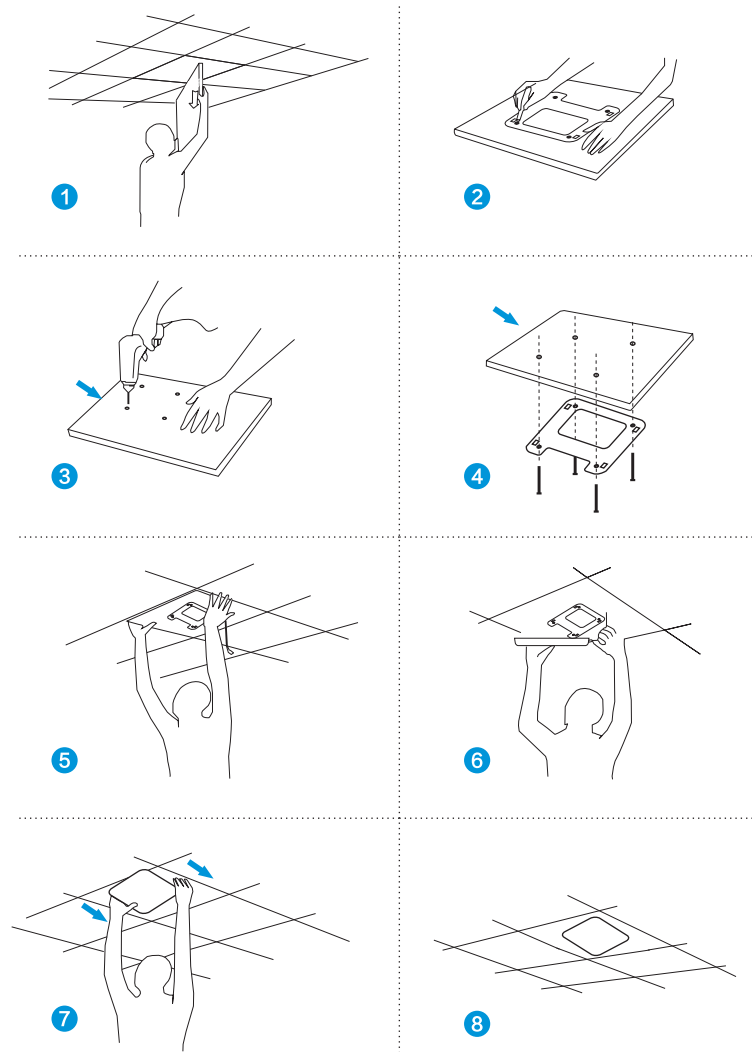
• Ports Instructions

Ports & Buttons	Ports Instructions
DC	Power port
LED Indicator	Led indicator will be bright when Ethernet cable is connected
Reset	Reset button,will make device revert to factory settings ,press it for 10 seconds when powered,device will reboot
WAN	Connect WLAN internet, WAN port connect to ADSL modem or community broadband cable. Under AP, repeater mode, WAN port will be changed to LAN port
LAN	LAN port, which can connect LAN device

\* The interface for different models of products may be different, the above diagram is only for reference, pls refer to the actual product !

2/Device installation

Ceiling Access Point



1/Product introduction

inWall Access Point

• LED indicator definition

Front		Back	
LED Indicator	Designation	Normal status	Explanation
	SYSTEM LED	Green	System boots up successfully

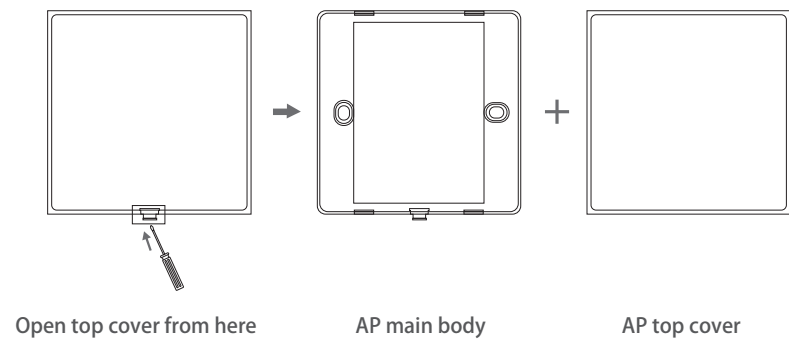
• Ports Definition

Port	Explanation
WAN	Connect to internet through ADSL modem or FTTH broadband. Under AP and repeater mode, WAN port will be changed to LAN port

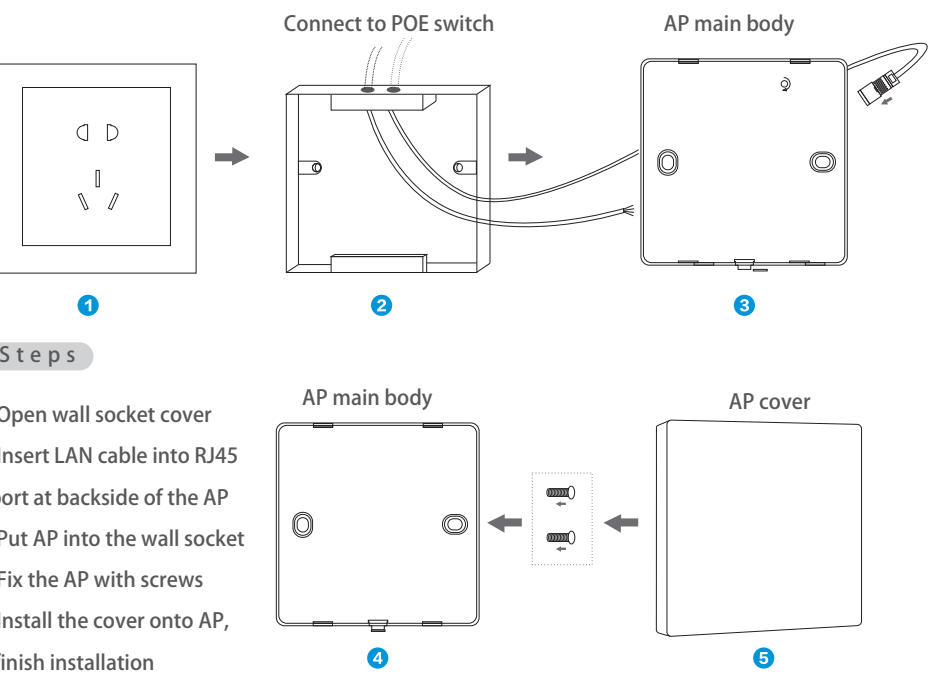
2/Device installation

inWall Access Point

• Step 1: Remove AP top cover with screw driver

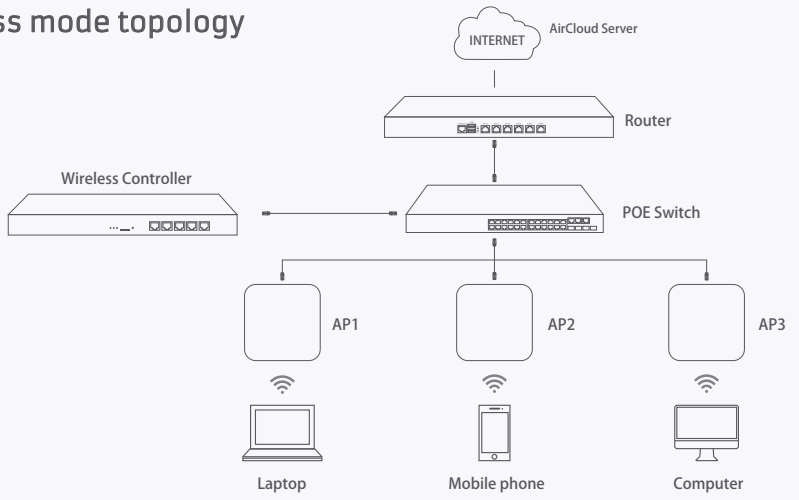


• Step 2: Install AP

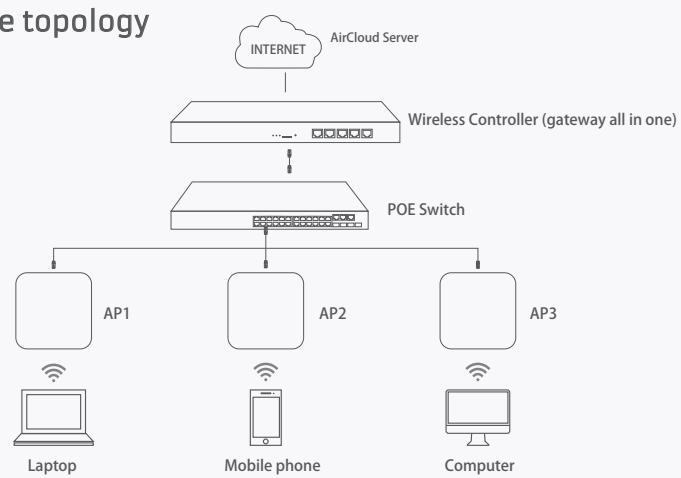


3/Device connection

Bypass mode topology



Gateway mode topology



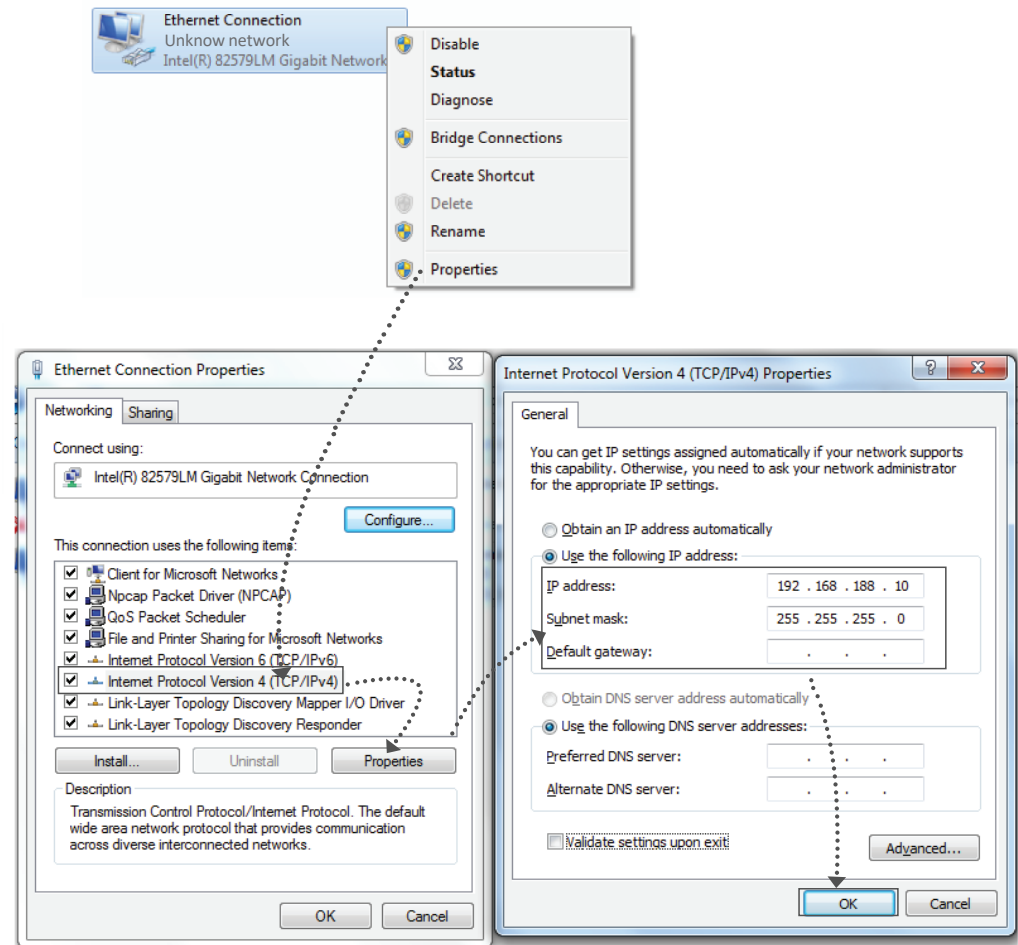
Tips: When the AP is a standard active 48V PoE device. Please use a switch that supports IEEE802.3at standards. When deploying a large wireless network, with many APs in the network, it is recommend to use an Wireless controller in the network to centrally manage all AP in the network.

4/Device management

4.1 Web login Management

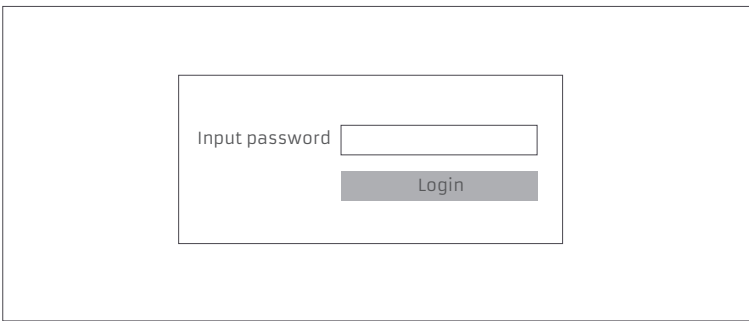
Connect PC by LAN

(1). Using the LAN connection, you need to set the IP address of the TCP/IP property of the network card to 192.168.188.X (X is number of 2--252) first, so that the device and PC in the same IP segment, and set the subnet mask to 255.255.255.0, as shown in the following picture:

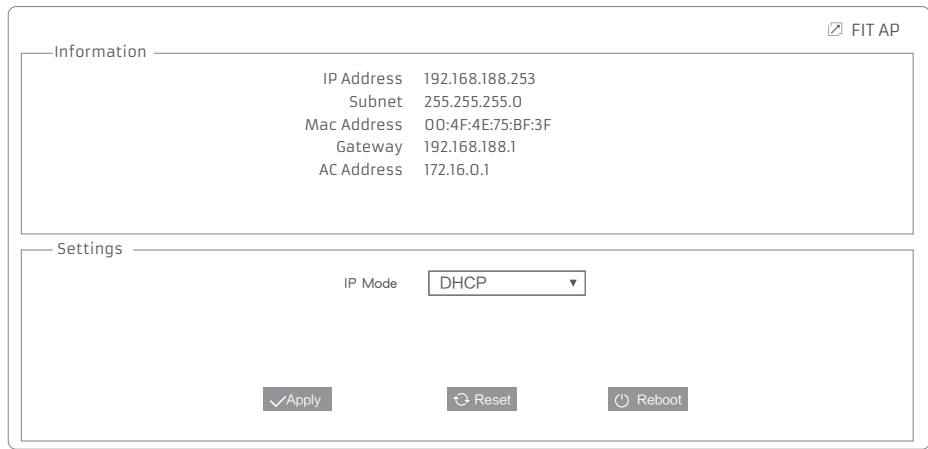


4.2 AP mode

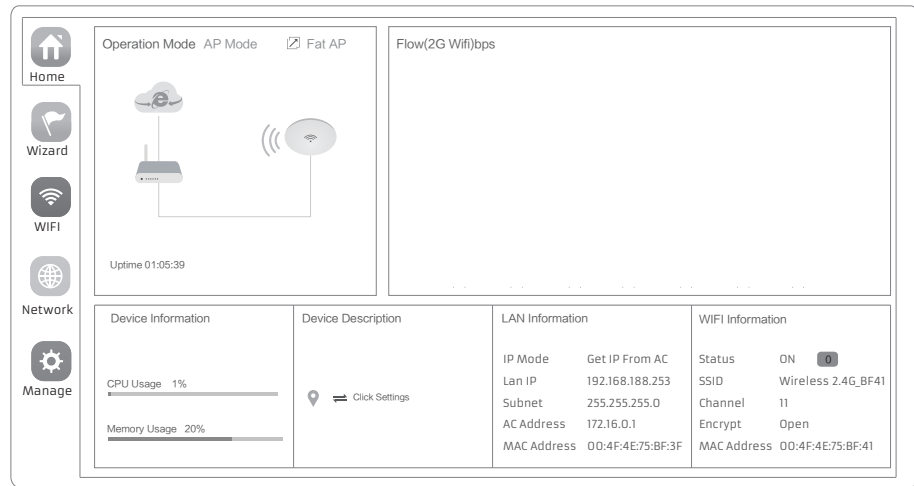
1.Use an Internet Browser to visit http://192.168.188.253, the login screen will pop up as shown in the following picture, the default login password: admin, after completing it will go to the wireless AP settings page.



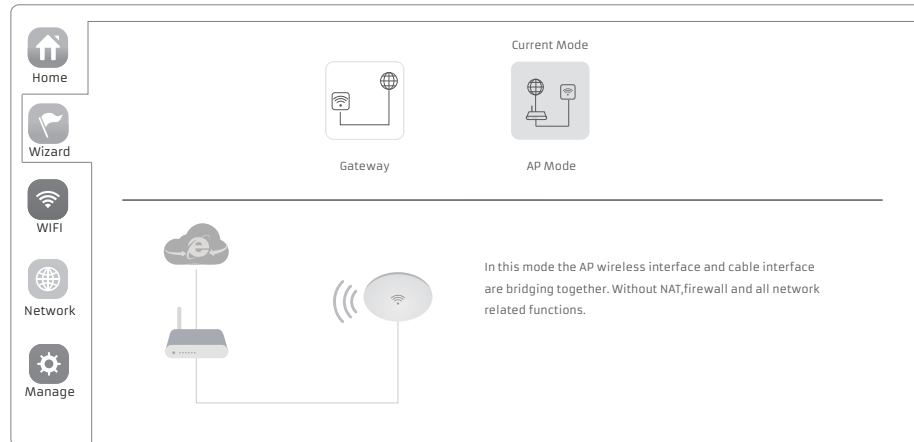
2.Default is FIT AP mode page, users need to click the button at the right corner to change it to FAT AP mode if needed.



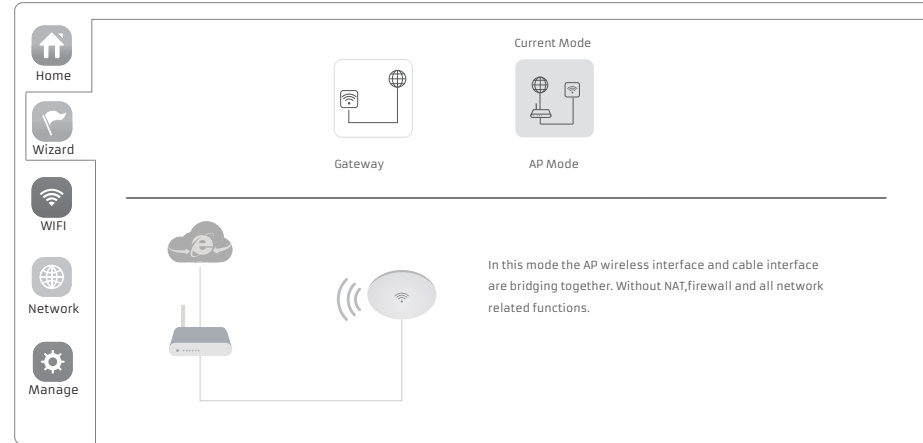
3. FAT AP mode home page is as below:



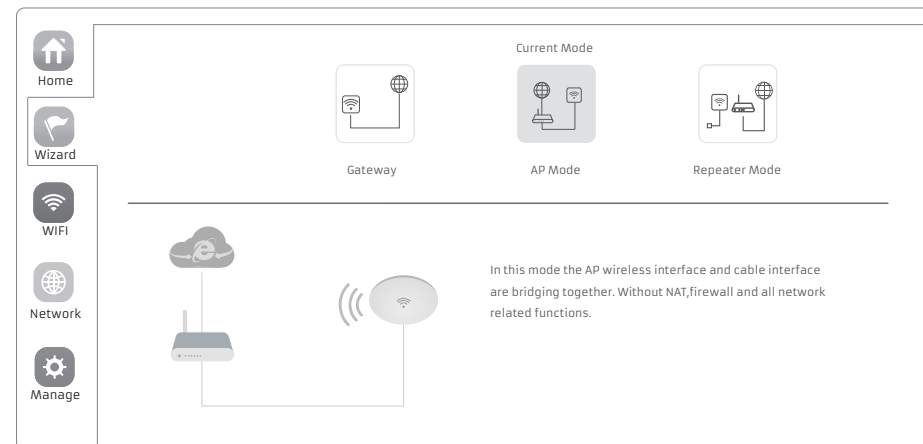
4.Setup Wizard page, choose AP mode as the current working mode. For Ceiling AP models TOP-12AC, TOP-18AX and TOP-30AX-1G.



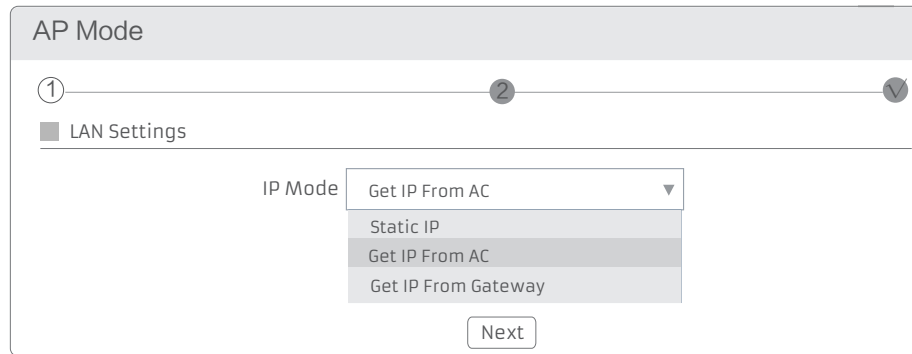
4.Setup Wizard page, choose AP mode as the current working mode. For inWall AP models inWall-U618AX and inWall-U630AX.



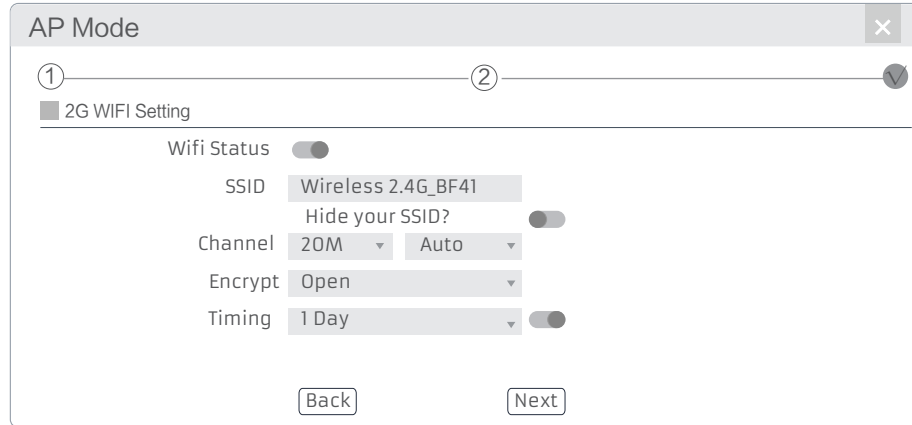
4.Setup Wizard page, choose AP mode as the current working mode. For Ceiling AP model TOP-30AX-2.5G



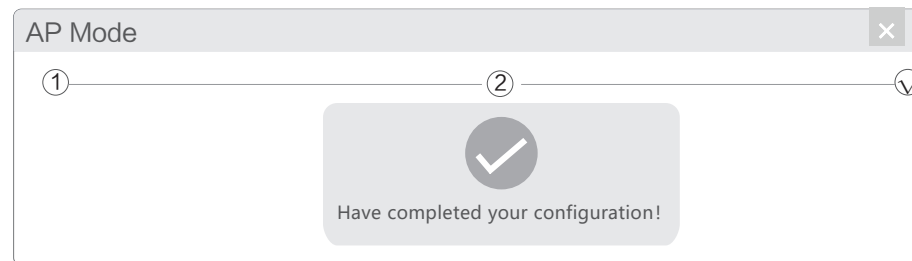
5.In AP setup page,choose “Get IP from AC” in connection type when you have a Controller or else select Gateway or Static IP, choose next step.



6. In Wifi setup page,set up as the picture shows below:



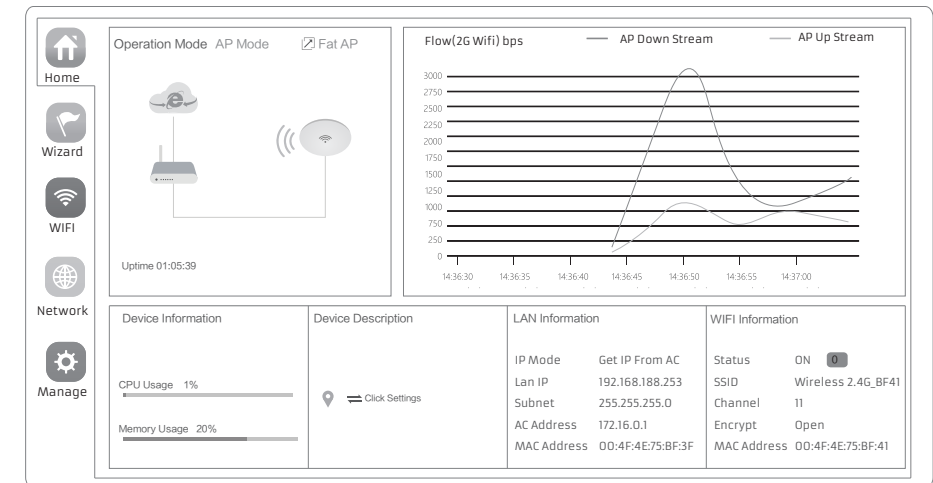
7.Setup completed



#### 4.3 Internet setup and Status

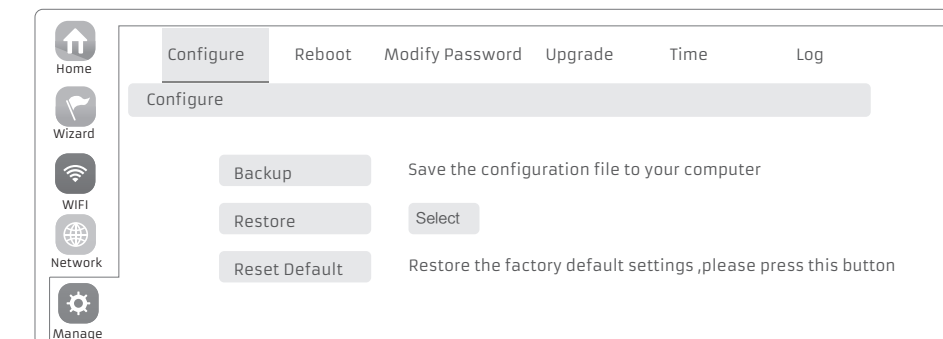
**IP settings:** After the configuration is completed, the wireless AP will restart and enter the working status you set. Then change the IP address of your computer to automatic acquisition, computer and other wireless devices can connect to the previous router via a wireless AP for wireless Internet access.

**View status:** Manually set an fix IP address for your computer to 192.168.188.X (X is number of 2-252) , access into wireless AP IP address, login to view management status, as shown in the following picture.



#### 4.4 Configuration Management

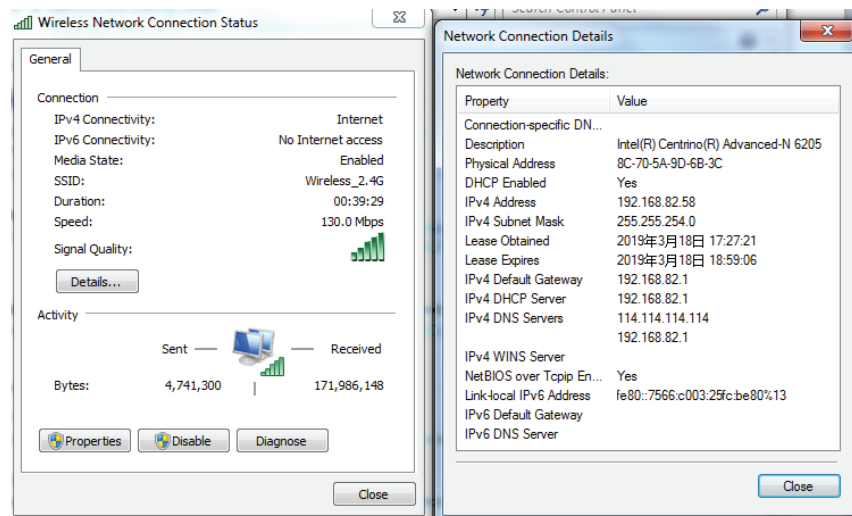
Users can backup,reboot and reset to factory default settings through device management menu options, together with modify the WEB login password, upgrade firmware, time synchronization and system log statistics and other functional settings.



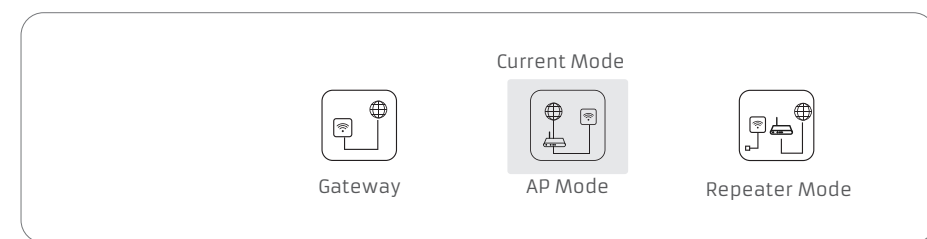
#### 4.5 Wireless testing

1.Use Laptop or mobile phone to test whether the wireless network can surf the Internet: click wireless network, select the wireless SSID, enter the password (Default: 123456789), test whether you can surf the Internet.

2.Check the status of the wireless network connection, signal quality, signal speed, transmission and data rate: click on the details, check if the IP address and DNS server address, etc., obtained correctly, confirm that the device is working properly.



#### 4.6 Other mode



- Gateway Mode  
Realize router function, WAN port connect with modem (ADSL or Fiber) , or WAN port connect internet by dynamic or static IP address to go online.
- AP mode  
Under AP mode, NAT, DHCP, firewall, and all WAN related functions are turned off, all wireless and wired interfaces are bridged together, no distinguishing between LAN and WAN.
- Repeater mode (TOP-30AX-2.5G ONLY)  
In this mode the AP works as a Universal Repeater which can repeat the wireless signal of other wireless devices like a Wireless Router or Access Point. All interfaces are bridged together. Without NAT, Firewall, and all network related functions.

##### Operation mode setup

Based on the Quick Setup Wizard for each mode shown in the above picture, Set the parameters and options that user needs, and click Next step until the settings for each operation mode are completed .

#### Common Problem and Solution

##### Q1: Forget login name and password ?

**A1:** Reset to factory default: press the reset button for 10 seconds and release it, the device will reboot and revert to factory default settings

##### Q2: Can not Login wireless AP management through WEB page ?

- A2:** 1.Check if PC with static IP and if this IP is in the same IP segment of AP, make sure not set to other IP range.  
2.Reset AP and re- connect to AP.  
3.Make sure wireless AP IP address is 192.168.188.253 and not occupied by other devices .  
4.Check if there is something wrong with PC and Ethernet cable ,recommend to use CAT 5 Unshielded Twisted cable .

##### Q3: Forget wireless network password ?

**A3:** 1.Connect AP by wired ,login WEB management page-click wireless settings- basic settings- password-set a new password for wireless network.  
2.Reset it, the default password is 123456789.

##### Q4: Can not get IP Address ?

- A4:** 1.Under gateway and WISP mode, check if DHCP server is on  
2.Under repeater and AP mode, check if upper network connection is normal ,or if LAN network DHCP server is working well .

##### Q5: How to change FIT AP to FAT AP ?

**A5:** Switch FAT and FIT mode by clicking the button at right corner, then device will reboot .After rebooting, please clear cookie and then login .

**NOTE:** Once the device is switched to FAT AP mode, AC wireless controller will not be able to manage & control it .

##### Q6: Wireless controller device list cannot get AP devices ?

**A6:** The mode for the controller and AP are different.

**NOTE:** All the AP support both FAT and FIT AP mode, the default mode is FIT AP mode .

\*This QIG is only used for instructions and provided an accurate as we can, but we cannot make sure all the information in this QIG is correct. This QIG may be updated because of the products upgrade, we have the right to revise the QIG without any notice.

#### www.airlive.com

##### Declaration of Conformity

We, Manufacturer/Importer

**AirLive Technology Corporation**

**4F, No.132, Lane 235, Baoqian Rd., Xindian Dist.,**

**New Taipei City 23145, Taiwan**

Declare that the product

**Wi-Fi 5/6 Ceiling Access Point**

**TOP-12AC, TOP-18AX, TOP-30AX-1G**

**TOP-30AX-2.5G**

is in conformity in accordance with 2014/30/EU and 2014/35/EU

directives, including the following safety and EMC standards:

##### Regulatory Approvals

###### • CE Statement Clause

■ **EN 55032:2015+A1:2020+A11:2020**

Electromagnetic compatibility (EMC)

■ **ETSI EN 301 489-1 V2.2.3 (2019-11)**

Electromagnetic compatibility (EMC)

■ **ETSI EN 301 489-3 V2.2.0 (2021-11)**

Electromagnetic compatibility (EMC)

■ **ETSI EN 301 489-17 V3.2.4 (2020-09)**

Electromagnetic compatibility (EMC)

■ **EN 55035:2017+A11:2020**

Electromagnetic compatibility (EMC)

■ **EN IEC 62368-1:2020+A11:2020**

Electromagnetic compatibility (LVD) - Safety

■ **ETSI EN 300 328 V2.2.2 (2019-07)**

■ **ETSI EN 301 893 V2.1.1 (2017-05)**

■ **ETSI EN 300 440 V2.2.1 (2018-07)**

■ **EN IEC 62311:2020**

##### Manufacturer/Importer

Name : A van Rossem Position/ Title : Product Manager

Place : Republic of China (Taiwan)

Date : April 2023

##### CE marking



##### • CE Marking Warning

This is a Class A product. In a domestic environment this product may cause radio interference in which case the user may be required to take adequate measures.