

Wi-Fi 5Ghz AC900 Outdoor CPE

AirMax5X-AC9

airlive®



Qualcomm
QCA9563

5Ghz
AC900

18dbi
Built-in antenna

PTP/PTMP
AirCloud

AP/Repeater
Mode

LED Status
Display

2 x
WAN/LAN

Multiple
4x SSID

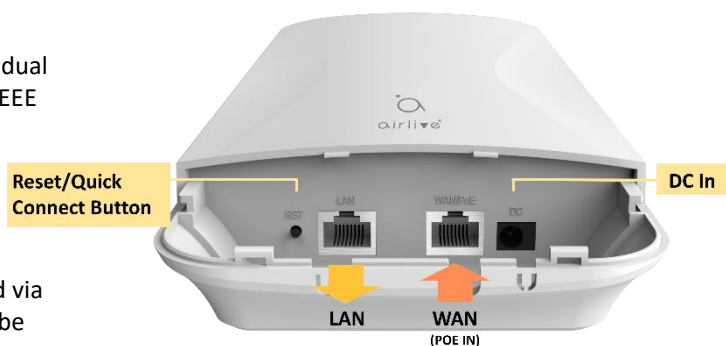
48V
PoE 802.af

IP-65
Water-Proof

Overview

High Performance 5GHz Outdoor AP/Repeater CPE

AirMax5X-AC9 is a high performance 900Mbps Outdoor AP/Repeater/CPE built to the highest standard. It features dual polarity MIMO antenna to ensure optimal reception. 48V IEEE 802.af PoE is featured to allow long cabling distance.



Cloud Control: The AirLive AirMax5X-AC9 can be controlled via AirCloud, once the AP has been added to the Cloud. It can be controlled from any location.

Professional Outdoor design+ Internal Lightning Protection, Suitable for multiple harsh environments.

Adopt outdoor ABS Plastic shell and professional lightning protection components, provide IP65 water-proof, dust-proof, suit for multiple harsh environment. even in extreme hot and cold environment (-20°C ~ +55°C), also can work stable

Features

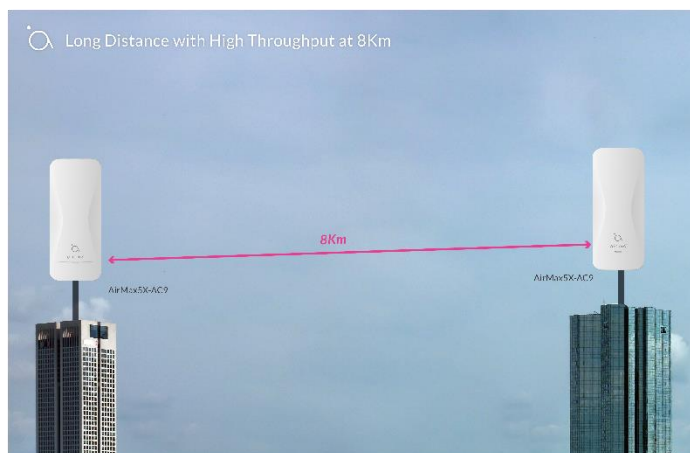
- 802.11 a/n/ac compliant
- LED Status Display
- IP 65 Enclosure
- Built-in 18dBi Antenna
- Up to 8Km PTP distance
- 5Ghz AC 900Mbps
- 1 x 10/100/1000Mbps WAN
- 1 x 10/100/1000Mbps LAN
- 48V IEEE 802.3af PoE power input (WAN)/ DC In

Simple to Configure

Support one-click pairing, Press the button for 2 to 5seconds to automatically pair the CPE devices together. avoid the complex setup program, simple to check the working status.

5GHz frequency, more channels, lower latency, higher stability

AirMax5X-AC9 with full frequency range of 5150~5850MHz, it avoid the frequency interference problem, fully meet with data transmission in fast speed, low delay, high stability requirement in wireless security or data transmission at up to 868Mbps.



Wi-Fi 5Ghz AC900 Outdoor CPE

AirMax5X-AC9

airlive®

Client CPE/Signal Strength LED Display

With visible side LED Display and signal strength for quickly build point to point and point to multi point wireless connection. Easy installation and debugging. save installation cost.

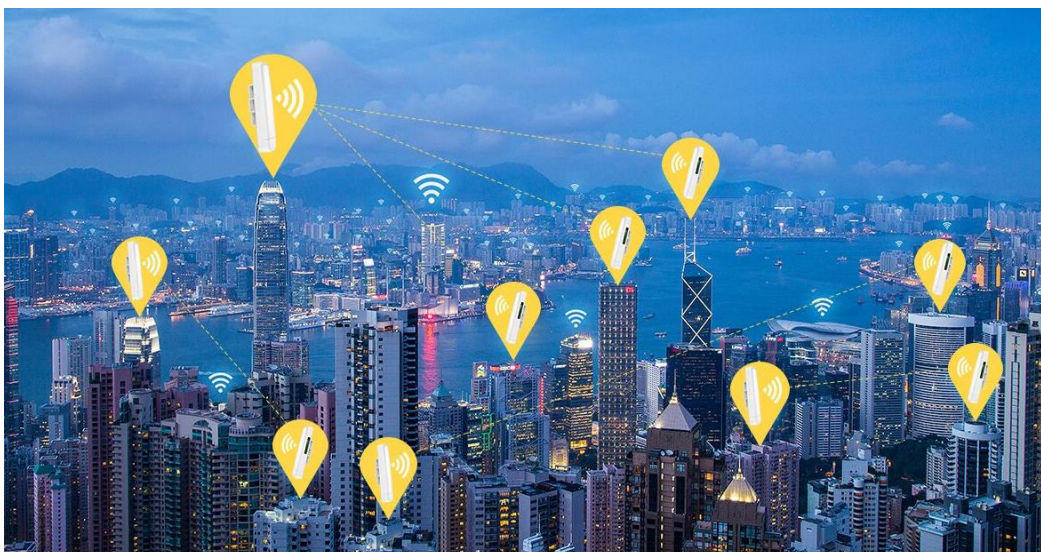


Advanced AP/Repeater/Cloud Point to point and point to multiple point application

The AirLive AirMax5X-AC9 offers several different ways to control and operate

AP and Repeater mode: In this mode the AirMax5X-AC9 works as an AP or Repeater. It allows the installer to setup the Point to point or point to multiple point wireless application. The device comes with the wireless switch button installer which is easy to configure the device and view the status. When the installer setup point to point or point to multipoint application. Difficult part is always wireless line of sight. By using device LED status, the installer can be easy to know if the device is connected to each other.

Cloud Control: The AirLive AirMax5X-AC9 can be controlled via AirCloud, ones the AP has been added to the Cloud. It can be controlled from any location. This offers extra benefits when dealing with a large network of Access Points, as local access is not needed, and support can be giving from a remote office. Also, multiple levels of control can be giving in the Cloud from Admin to only viewer rights. AP's can be added and removed at anytime.



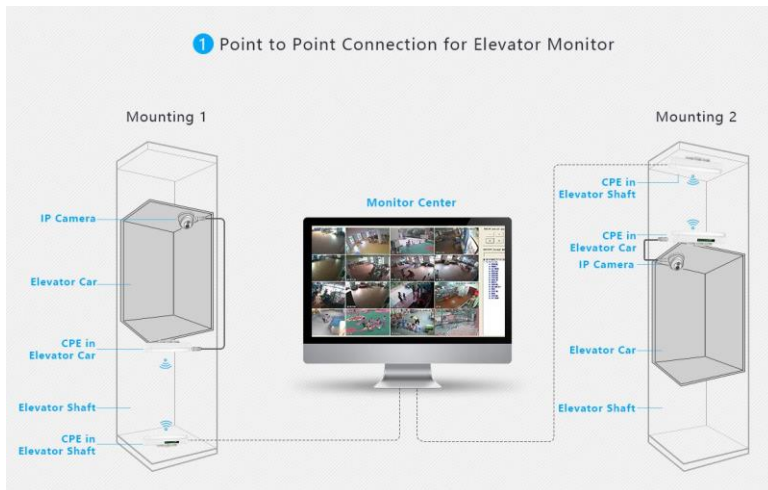
Wi-Fi 5Ghz AC900 Outdoor CPE

AirMax5X-AC9

airlive®

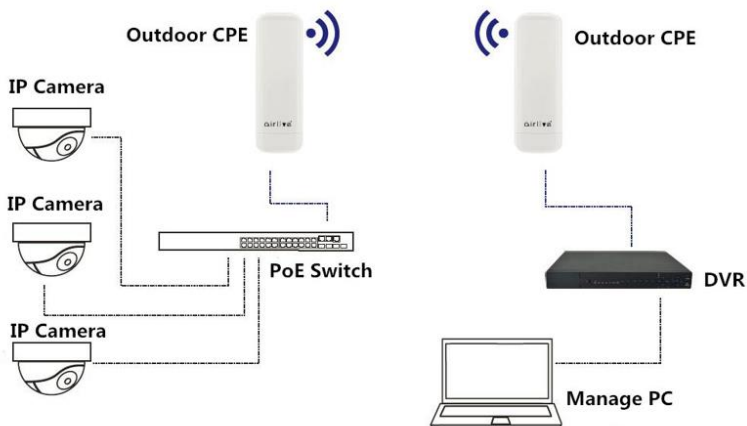
Multiple Application Environment

1. Elevator Monitor



2. Point To Point connection application

PTP Working Diagram of Outdoor CPE work with Multiple IP Camera



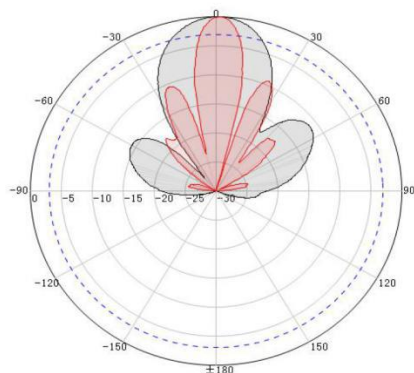
Antenna Specification

The build-in antenna of the AirMax5X-AC9 has Vertical/Horizontal dual polarization.

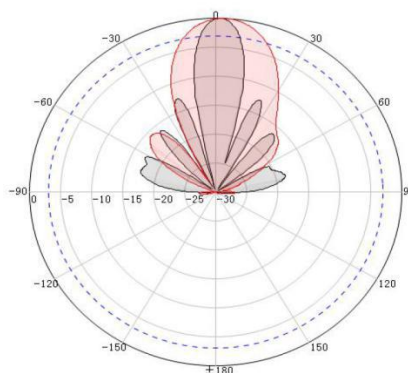
The Horizontal beam angle is 30°

The Vertical beam angle is 15°

Horizontal polarization



Vertical polarization



Model	AirMax5X-AC9
Device Interface <ul style="list-style-type: none">• Main Chip: Qualcomm QCA9563• Flash:16MB• RAM:128MB• Standard: IEEE 802.11ac, IEEE 802.11n, IEEE 802.11a• Frequency: 5.150GHz~5.850GHz• Channel: CH36 ~CH165• Modulation: OFDM = BPSK, QPSK,16-QAM,64-QAM; DSSS = DBPSK, DQPSK, CCK• Max Data Rate: 867Mbps• RF Output Power: ≤24dBm• Antenna: 18dBi Dual-polarized panel antenna• Antenna Angle: H 30°, V 15°• WAN: 1 x 10/100/1000Mbps RJ-45 WAN Port, support IEEE 802.3af 48V PoE in• LAN: 1 x 10/100/1000Mbps RJ-45 LAN Port• LED Side Display: SYS, WAN, LAN, 5GWIFI, Signal x 4 for signal strength.• Reset Button: 1 x Reset Button, Press the button for 2 to 5 seconds to automatically pair, and press and hold for 10 seconds to restore to factory default.• Power Consumption: <10W• Water-proof Level: IP65• 5G EVM: 802.11a_54M:≤-25dB; 802.11n_MCS7:≤-28dB; 802.11AC_MCS9:≤-32dB• ppm: ±20ppm Firmware Function Wireless <ul style="list-style-type: none">• SSID broadcast• Multiple SSID up to 4• SSID hide• Wi-Fi timed on/off• MAC filter: Support whitelist (32)• Relay Function• User isolation: wireless network isolation, AP internal isolation• Security: OPEN, WPA, WPA2, WPA-PSK, WPA2-PSK• Support RF power adjustable based on environment• Limited number of wireless clients, supporting a maximum of 64 users Working Mode <ul style="list-style-type: none">• AP: The device covers other clients and devices with wireless network signals and connects to other routers using Ethernet to access the WAN.	<ul style="list-style-type: none">• Repeater: The device connects to other wireless AP devices through wireless signals and covers other clients and devices with its wireless network signals. Network Function <ul style="list-style-type: none">• VLAN setting• DHCP server• Cloud server Device Management <ul style="list-style-type: none">• Backup the configuration information• Restore the configuration information• Reset to factory default settings• Device reboot: reboot immediately or timed reboot• Firmware upgrade• Time management: including system time and time synchronization• System log• Support WEB GUI management• Support Cloud remote management Multiple Language <ul style="list-style-type: none">• English ESD/ Surge Protection <ul style="list-style-type: none">• ESD: Air ±8KV, Touch: ±6KV• Electrical Surge: Common Mode: 2K, Differential Mode: 1K Environment <ul style="list-style-type: none">• Operating temperature: -20°C ~ +55°C• Storage Temperature: -40°C ~ +70°C• Storage Humidity: 5% ~ 95% (non-condensing)• Enclosure: IP65 Standard package of Controller <ul style="list-style-type: none">• Product size: 26.80 x 11.50 x 3.65/4.50 cm(L*W*H)• Package size: TBD cm(L*W*H)• Package content: TBD 1 x AirMax5X-AC9, Install Accessory, QIG Ordering information <ul style="list-style-type: none">• AirLive AirMax5X-AC9 Wi-Fi 5Ghz AC900 Gigabit Outdoor CPE

* Specification will be changed without prior notice

* All trademarks, logos and brand names are the property of their respective owners.

AirLive