

AC.TOP

11 AC Wide Range Ceiling Mount PoE Access Point

- 2.4G/5G Dual Band
- 802.11 a/b/g/n and 802.11 ac
- 1 X Gigabit Ethernet Port with PoE Supported
- Built-in MIMO Antenna
- Up to Max. 23dBm Output Power (Limited to 20dBm in EU)
- Support Wireless Access Control and Bandwidth Control
- Ceiling Mount
- Support Multi-SSID up to 32
- Concurrent Users up to 100



AirLive AC.TOP is MIMO 802.11 a/b/g/n/ac Ceiling AP with data rate up to 1200Mbps which is ideal for wireless video streaming or video gaming. Ceiling mount type AC.TOP with high power also provides wide coverage. It built-in IEEE 802.3af PoE to deploy the PoE network environment that reduces the complexity wiring and easy- to-install into the existing network environment. With different wireless modes, AC.TOP not only fully fulfills to different application but also expand wireless coverage.



Complies with IEEE802.11a/b/g/n Standard and 5GHz IEEE802.11ac Draft

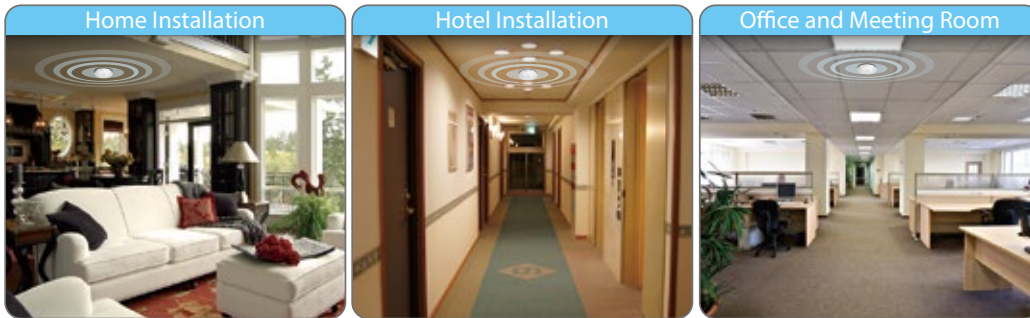
The product is designed with 2T2R in both 5GHz and 2.4GHz frequency fully complied with IEEE802.11a/b/g/n standards, and also supports the IEEE802 11ac draft specification in 5GHz band. IEEE802.11ac is backward compatible with 11n, there is no interoperability problem.

11ac Provide Gigabit Speed for Video Streaming and Gaming

Utilizing the next generation of Wi-Fi technology 11ac in 5GHz band, it can support up to 867Mbps data rate and faster than current 11n device. User will enjoy truly gigabit high performance on both wired and wireless interface. In addition, stable wireless connection and high bandwidth let you enjoy the network applications without any interruption.

Ceiling Mount Wireless AP

AirLive AC.TOP is ceiling mount AP. It minimizes visibility for any type public areas, such as enterprise, government, campuses, hotels, restaurant, coffee shop, clinic and hospital...etc.



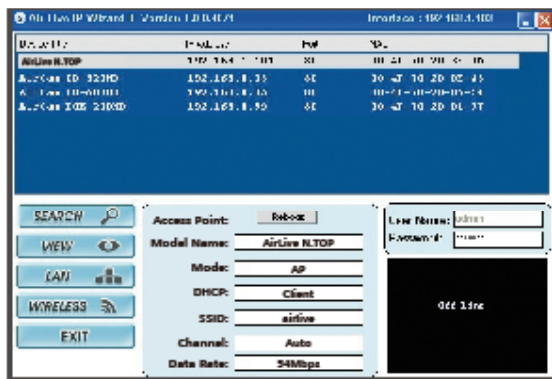
2.4G/5G Dual Band Concurrent Provide High Data Rate up to 1200Mbps

The AC.TOP is the first ceiling mount AP that features both 2.4G/5G dual band concurrent and wide range radio that can deliver up to 23dBm of output power (limited to 20dBm in EU). This combination creates an AP delivers both high throughput and wide coverage than conventional AP. In addition, its maximum throughput is up to 1200Mbps

802.3af PoE Ports

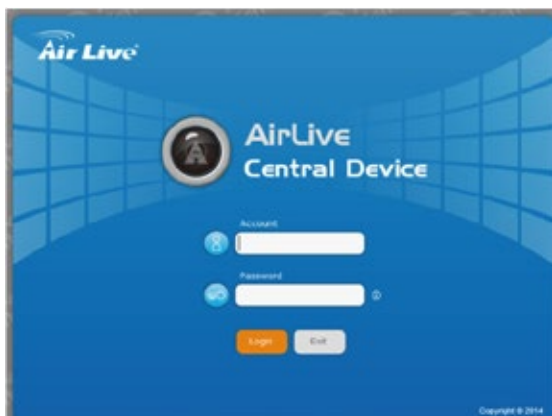
Despite of its small housing, AirLive managed to put one gigabit Ethernet port into the AC.TOP, and it function as PoE port. The PoE port can accept PoE input 48Volts so you can use AirLive's 802.2af/at POE Injector (AirLive POE-48PB v2) or PoE switch is required for PoE installation.

* Optional 802.2af POE Injector (AirLive POE-48PB v2) or PoE switch is required for PoE installation.



IP Wizard and AirLive Central Wireless Management

The AC.TOP work with AirLive IP finder utility and Management Software AirLive Central Wireless. Therefore, you can discover AC.TOP, change SSID, and upgrade firmware without visit the device's Web UI. You can also do the patch setting such as upgrade the firmware upgrade for multiple AC.TOP together.



Multiple SSID and Wireless Scheduling

AirLive AC.TOP provides multiple SSID capability so you can create up to total of 32 virtual APs. With the wireless scheduling feature, you can pre-configure the AC.TOP before you leave your office or home, so when the time is up, the AC.TOP will start to execute the routine jobs automatically, it will reduce the power loading and save your bill.

Build in Radius Server

For the enterprise or SMB offices managers, wireless security always are their first concert. AC.TOP can support Comprehensive Wireless security control. Moreover it also build-in RADIUS (Remote Authentication Dial-in User Service) server which allow MIS to manage and store user names and passwords centrally in the AC.TOP. Thus , external RADIUS server is not required.



Specifications

SOC+RF

- MEDIATEK MT7620A (CPU) +QCA9882

Flash

- 16MB SPI Flash

RAM

- 64MB DDR2 RAM

LAN Port

- 10/100/1000M (Auto-MDI/MDI-X) UTP Port x1

Antenna

- 2 X 2.4G 3dBi + 2 X 5G MIMO Internal Antenna

Frequency Range

- 2.4G : 2.4000~2.4835GHz (Industrial Scientific Medical Band)
- 5G : 5180 ~5240GHz ETSI
5745 ~ 5825GHz for FCC

Data Rate

- 11n (40MHz): MCS0-7, up to 300Mbps
- 11n (20MHz): MCS0-7, up to 144Mbps
- 11g: 6, 9, 12, 24, 36, 48,54Mbps
- 11b: 1, 2, 5.5, 11Mbps
- 11ac(80Mhz): MSC0-9 , up to 866Mbps

Wireless Security

- WEP
- WPA-PSK
- WPA2-PSK
- WPA-Radius
- 802.1x/EAP

Software

- Web-Based Management
- Setup Wizard
- Multiple SSID up to 32, Virtual AP, Hidden SSID, VLAN
- WMM, MAC Access Control, Wireless Client Isolation, Channel, RTS Threshold
- TX Output Power Adjustment
- Wireless Mode: AP,, WDS Repeater
- Restore to Factory Default
- Configuration Backup and Restore
- Firmware Upgradeable via Web Management
- Support Internal Radius Server

Management Feature

- IP Wizard
- AirLive Central Wireless
- SNMP v1/v2c

Maximum Output Power

* Real output power is depend on regulation.

- 2.4GHz:
 - 11b(11M): 20±1.5 dBm
 - 11g(54M): 19±1.5 dBm
 - 11n(20MHz, MCS7): 14±1.5 dBm
 - 11n(40MHz, MCS7): 13±1.5 dBm
- 5GHz:
 - 11a(54M): 22±1.5 dBm
 - 11n(20MHz, MCS7): 26±1.5 dBm
 - 11n(40MHz, MCS7): 25±1.5 dBm
 - 11ac(80MHz, VHTMCS9): 20±1.5 dBm

Receive Sensitivity

- 2.4GHz:
 - 11b(11M): -90±2dBm
 - 11g(54M): -75±2dBm
 - 11n(20MHz, MCS7):-70±2dBm
 - 11n(40MHz, MCS7):-70±2dBm
- 5GHz:
 - 11a(54M): -72±2dBm
 - 11n(20MHz, MCS7): -68±2dBm
 - 11n(40MHz, MCS7): -68±2dBm
 - 11ac(80MHz, VHTMCS9): -58±2dBm

Power

- 12V / 1A Switch Power Adapter
- 802.3af PoE Input

Temperature

- Operating: 0°~40°C , Storage: -20°~60°C

Humidity

- Operating: 10~90% (Non-Condensing)
- Storage: Max.95% (Non-Condensing)

Certification

- CE,FCC

Ordering Information:

AirLive AC. TOP 11 AC Wide Range Ceiling Mount PoE Access Point