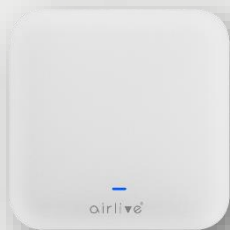


# Wave 2 MU-MIMO AC 1200 Gigabit PoE Access Point Central & Cloud Management, Seamless Roaming

airlive®

## AirCloud TOP-12AC



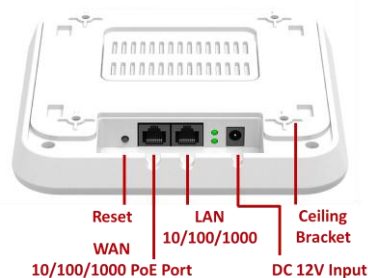
Wireless AC1200	Central Management supported	Cloud Management Supported	5G & 2.4Ghz Dual Bands	AP/Gateway Mode
Wave 2 MU-MIMO	2 x Giga WAN/LAN	Seamless Roaming	FIT/FAT Mode	48V PoE

## Overview

### TOP-12AC service 24/7 365 Management via the AirCloud

The Airlive TOP-12AC is a multi function Access Point with 1x 1Gbps LAN port and 1x 1Gbps WAN 48V PoE input port. It is supported by AirCloud and AirLive wireless controller. The TOP-12AC supports both FIT and FAT operation modes and works with AirLive wireless Controller and AirCloud. Thus, it is ideal for both resident and Enterprise.

When setting in FAT operation mode, it works as standalone Access point that can be welcomed for home or small office. SMB client can use the AirLive Wireless controller to manage multiple sets of APs in a single location. Large Enterprises and organizations can do 24/7 365 management and access unlimited numbers of APs from anywhere anytime with an internet connection via AirCloud.



## Wireless Seamless Roaming

Moreover, the TOP-12AC supports Wireless Seamless Roaming technology 802.11r/802.11k/802.11v and Fast BSS Transition (FT) that users can stay connected and productive while on the move. These technologies work together to allow devices to quickly and seamlessly switch between access points without interrupting the connection or requiring the user to manually reconnect. This technology is particularly useful in environments where users need to move around, such as in large offices, airports, shopping malls, and campuses.



## Features

- Wi-Fi 5 11a/b/g/n/ac compliant
- Wave 2 MU-MIMO
- 2T2R 1200Mbps Wireless High Speed (300Mbps + 900Mbps)
- 20/40/80Mhz Channel
- Concurrent dual bands, 2.4Ghz & 5Ghz
- Seamless Roaming
- 1 x 10/100/1000mbps WAN
- 1 x 10/100/1000mbps LAN
- 802.3af PoE power input (WAN)
- FIT/FAT Operation mode
- AP and AP Gateway Operation Mode
- Cloud Management Supported via AirCloud
- AirLive Wireless Controller Supported
- Up to 8 Multiple SSID
- VLAN Support in AP Mode
- QoS in AP Gateway Mode
- URL/MAC/IP Filtering

## AirCloud TOP-12AC

### Advanced Management

### Flexible Operation - Central Management, Cloud Management, Stand-Alone AP

The AirLive TOP-12AC can be an FIT AP or FAT AP. It can work as a standalone Access Point or Gateway for home or small WLAN applications. For Large Enterprises or organizations, the TOP-12AC is supported by the AirLive Wireless Controller and AirCloud with advanced and efficient central or/and cloud management.

### 24/7 365 Central and Cloud management via AirCloud with unlimited numbers of AP for Large Enterprises or Public Access

**Cloud Control:** the AirLive TOP-12AC can be managed through the AirCloud once it has been added to the Cloud. This provides remote control from any location, making it advantageous for large networks of Access Points as local access is not necessary and support can be provided from a remote office. Additionally, multiple levels of control can be assigned in the Cloud, ranging from admin to viewer rights. Access Points can be easily added or removed at any time.

### Central Management via AirLive Wireless Controller for SMB

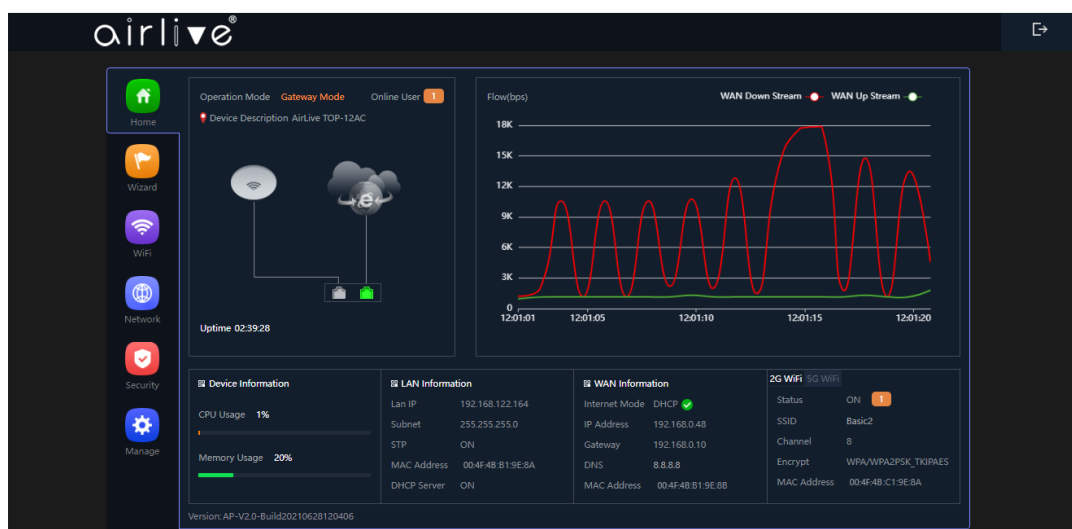
**Fit mode** is a setting for the TOP-12AC Access Point that allows it to be controlled by an AirLive WLAN Access Controller. The WLAN controller manages all wireless settings, encryption, and other functions, serving as the central control hub for the TOP-12AC Access Point. Fit mode is ideal for SMB or large enterprise setups where multiple access points need to be controlled at once. By using Fit mode and a WLAN Access Controller, it can manage all connected APs in a single location; setup time and complexity can be greatly reduced.

### Works as standalone AP for Home or SOHO Office

**Fat mode:** The TOP-12AC Access Point functions as a standalone device with all wireless and encryption functions being controlled within the AP itself. This mode is more suitable for small setups like residential or offices with fewer APs. The Fat mode supports two operation modes - AP mode and AP Gateway mode. In AP Gateway mode, the TOP-12AC works as a gateway and uses its WAN port connecting to a modem/router via PPPoE, DHCP, or Static IP. In AP mode, the TOP-12AC can be connected to an existing network and work without the WAN port features.

### Live Status and Monitor

Monitoring your wireless internet usage by live stream graph, you can gain real-time insight into your network activity and make informed decisions about managing your internet resources.



Model	TOP-12AC AC1200 Access Point
<p><b>Device Interface</b></p> <ul style="list-style-type: none"> <li>• <b>Main Chip:</b> MTK, Dual Core MT7621DAT</li> <li>• <b>Flash:</b> 8MB</li> <li>• <b>RAM:</b> 128MB</li> <li>• <b>Ethernet (LAN):</b> 1 x RJ45 10/100/1000mbps</li> <li>• <b>WAN (PoE):</b> 1x RJ-45 10/100/1000mbps</li> <li>• <b>Wi-Fi:</b> 802.11b/g/n 2T2R(2.4Ghz), 802.11ac/a/n 2T2R (5Ghz)</li> <li>• <b>Button:</b> Reset x 1</li> <li>• <b>Power Input:</b> 1 x 12VDC or 1 x 48V (802.3af PoE)</li> <li>• <b>Antenna Connector:</b> Internal Wireless Antenna 4dBi (5Ghz) Internal Wireless Antenna 5dBi (2.4Ghz)</li> </ul> <p><b>WAN</b></p> <ul style="list-style-type: none"> <li>• <b>WAN:</b> PPPoE, DHCP, Static IP, (Bridge (AP Mode))</li> </ul> <p><b>Wi-Fi</b></p> <ul style="list-style-type: none"> <li>• <b>Standard:</b> IEEE 802.11a/b/g/n/ac, 2x2, 20/40/80 MHz channels</li> <li>• <b>Functions:</b> Multi-SSID 8 (4 per radio), SSID hidden, SSID isolation, Band Steering, RF power adjustable, Wi-Fi time on/off to save energy</li> <li>• <b>Security:</b> WEP, WPA, WPA2, WPA-PSK, WPA2-PSK</li> <li>• <b>Modulation :</b> OFDM, DSSS</li> <li>• <b>Seamless Roaming :</b> 802.11k, 802.11v, 802.11r</li> <li>• <b>Wi-fi Advanced:</b> Wireless client isolation</li> <li>• <b>Wireless Channel</b></li> <li>• 2.4G: 1~13 (CE Channel) (region dependent)</li> <li>• 5.8G: 36~48, 36~64, 100~140, 149~165 (region dependent)</li> <li>• <b>Wireless Speed:</b> 1200Mbps Wireless High Speed (300Mbps + 900Mbps)</li> <li>• <b>Wireless TX Power</b> 2.4G: &lt;20dbm, 5.8G: &lt;23dbm</li> <li>• <b>Wireless seamless roaming technology</b> a combination of technologies, including Fast BSS Transition (FT), 802.11r, and 802.11k. These technologies work together to allow devices to quickly and seamlessly switch between access points without interrupting the connection or requiring the user to manually reconnect. <b>802.11r</b> facilitates fast handovers by pre-authenticating devices with the next access point. <b>802.11k</b> provides better signal information for device decisions on which access point to connect to. <b>802.11v</b> offers QoS information for device selection of the best access point based on its needs.</li> </ul>	<p><b>Security</b></p> <ul style="list-style-type: none"> <li>• <b>Filter Rule:</b> URL Filter/Mac Filter/IP Filter</li> <li>• <b>URL/MAC/IP filtering:</b> White list/Black List.</li> </ul> <p><b>DMZ DMZ</b></p> <p><b>Port Forwarding Rule/Range</b> TCP/UDP</p> <p><b>VLAN</b> VLAN support SSID Max 4 per Band</p> <p><b>Cloud</b> AirCloud access support in Gateway/AP Mode</p> <p><b>FIT/FAT Operation Mode</b></p> <ul style="list-style-type: none"> <li>• FIT Mode: AP works with AC Controller (Enterprise)</li> <li>• FAT Mode: AP works standalone (Home use)</li> </ul> <p><b>Management</b></p> <ul style="list-style-type: none"> <li>• Web-UI, Remote Management, WLAN Controller, Cloud Management System AirCloud</li> </ul> <p><b>DDNS</b> Oray</p> <p><b>Max Concurrent users</b> 80</p> <p><b>Parental Control (Gateway Mode)</b></p> <ul style="list-style-type: none"> <li>• Mac Address Filtering, URL Filtering, IP Filtering</li> </ul> <p><b>AP/AP Gateway Mode</b></p> <ul style="list-style-type: none"> <li>• <b>AP:</b> In this mode, the AP Wireless and Cable Interface are bridging together. Without NAT, Firewall and all network related functions.</li> <li>• <b>AP Gateway:</b> In this mode, the WAN page is enabled and PPPoE, DHCP or Static IP can be selected. NAT is enabled and PC's in LAN ports share the IP to ISP through WAN port.</li> </ul> <p><b>VPN Pass Through (Gateway Mode)</b></p> <ul style="list-style-type: none"> <li>• IPsec, PPTP, L2TP</li> </ul> <p><b>Data Statistics</b></p> <ul style="list-style-type: none"> <li>• WAN Down Stream, WAN UP Stream</li> <li>• Wi-Fi Analyzer (2.4 and 5Ghz)</li> </ul> <p><b>Multiple Language</b> English/Spanish</p> <p><b>ESD Protection</b> ±6KV</p> <p><b>Environment</b></p> <ul style="list-style-type: none"> <li>• Operating temperature : -20°C ~ +45°C</li> <li>• Storage Temperature : -40°C ~ +70°C</li> <li>• Storage Humidity : 5% ~ 95% (non-condensing)</li> <li>• Enclosure : ABS fireproof material</li> </ul> <p><b>Standard package</b></p> <ul style="list-style-type: none"> <li>• <b>Product size:</b> 16.8 x 16.8 x 3.2 cm(L*W*H), 0.65kgs</li> <li>• <b>Package size:</b> 24.5 x 23.5 x 7.5 cm(L*W*H)</li> <li>• <b>Package content:</b> device x 1</li> </ul> <p><b>Ordering information</b></p> <ul style="list-style-type: none"> <li>• <b>AirLive AirCloud TOP-12AC</b> 11ac 1200Mbps Gigabit PoE Access Point Central and AirCloud management, Seamless Roaming</li> </ul>

AirLive