



## Smart Button SR-101

### Quick Installation Guide

## 01 Introduction

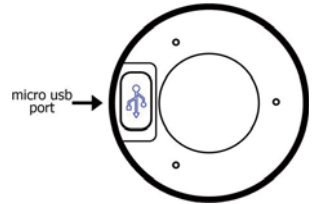
SR-101 Z-wave Smart Color Button is a battery-operated multifunctional remote button control. There is more than meets the eye. Smart Color Button is an on/off, adjustable percentage remote. It is also be used as a timer. This remote can be connected, operated into any Z-wave™ network from other manufacturer and or other applications.

**Note:** Please provide a 5 DVC voltage through micro USB port to wake the device up before the first using.

The rotation function and timer functions work only when the device is fitted upright or stick on the wall or the device will only work as on/off switch when fitted horizontal.

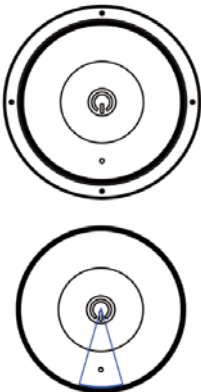
## 02 Include Smart Button -1

Turn the device on. Open the cover of the micro usb port and connect a micro USB to power up the device. Once powered up, device will automatically be in inclusion mode.



## 03 Include Smart Button -2

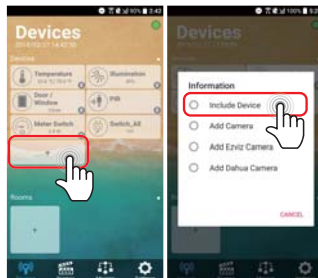
If device is not in inclusion mode, make sure device is placed against the wall, pointer pointing downwards (pointer will show white LED) and tap the center of the button three times.



## 04 Include Smart Button -3

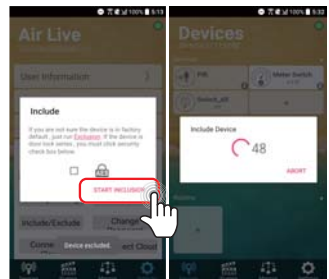
Open AirLive Smart Life APP Plus in your phone to add the sensors.

- Go to Devices page and click "+" "+" icon.
- Press Include Device



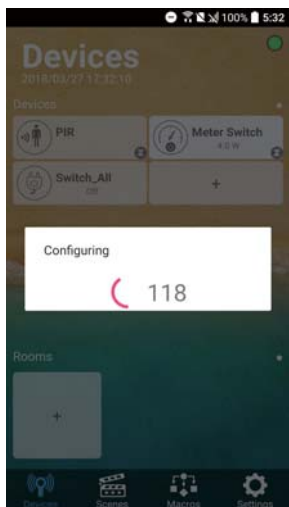
## 05 Include Smart Button -4

- Press "START INCLUSION"
- Start to include a device.



## 06 Include Smart Button -5

When the device is being included, APP will configure the setting into gateway.



## 07 Switch SR-101 Function Control

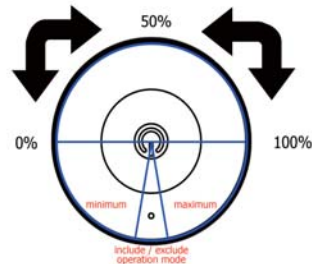
SR-101 can be used as a Controller and Timer. To shift function between Control mode and Timer mode, make sure device is placed horizontally, pointer pointing downwards (pointer will show white LED) and press until Pointer's LED light turns off.

Beep indication for which mode is as follows:

Mode	Beep Indication
Timer Mode	One long beep
Control Mode	Two short beeps

## 08 Control mode (Dimmer Percentage)

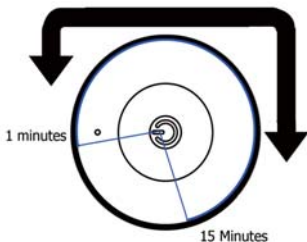
When the device is Switch on, device can work as a dimmer. To make device work as a dimmer, make sure device is place against the wall, and the pointer is on the upper half of the button. See below figure for the percentage level.



## 09 Timer mode -1

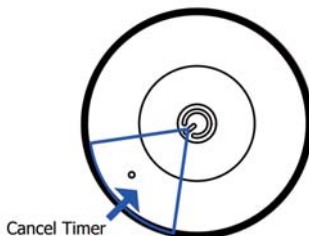
When device is at Timer Mode, the maximum length is 15 minutes. Each minute can be distinguished through change in the surrounding LED light.

To activate the timer, rotate it to the desired time and tap the device. When the timer starts, the pointer's LED will flash once and a beep sound. When countdown starts, surrounding LED will flash, and buzzer will on accordingly.



## 10 Timer mode -2

To cancel the timer, put the pointer into the cancel portion and tap the device. The surround LED is blue.



### FCC Interference Statement

This equipment has been tested and found to comply with the limits for a Class B digital device, pursuant to Part 15 of the FCC Rules. These limits are designed to provide reasonable protection against harmful interference in a residential installation.

This equipment generates, uses and can radiate radio frequency energy and, if not installed and used in accordance with the instructions, may cause harmful interference to radio communications.

However, there is no guarantee that interference will not occur in a particular installation. If this equipment does cause harmful interference to radio or television reception, which can be determined by turning the equipment off and on, the user is encouraged to try to correct the interference by one of the following measures:

- Reorient or relocate the receiving antenna.
- Increase the separation between the equipment and receiver.
- Connect the equipment into an outlet on a circuit different from that to which the receiver is connected.
- Consult the dealer or an experienced radio/TV technician for help.

This device complies with Part 15 of the FCC Rules. Operation is subject to the following two conditions: (1) This device may not cause harmful interference, and (2) This device must accept any interference received, including interference that may cause undesired operation.

**FCC Caution:** Any changes or modifications not expressly approved by the party responsible for compliance could void the user's authority to operate this equipment. This transmitter must not be co-located or operating in conjunction with any other antenna or transmitter.

### Warning

Do not dispose of electrical appliances as unsorted municipal waste, use separate collection facilities. Contact your local government for information regarding the collection systems available.

If electrical appliances are disposed of in landfills or dumps, hazardous substances can leak into the groundwater and get into the food chain, damaging your health and well-being. When replacing old appliances with new ones, the retailer is legally obligated to take back your old appliance for disposal at least for free of charge.

### RF Exposure Information (SAR)

This device meets the government's requirements for exposure to radio waves. This device is designed and manufactured not to exceed the emission limits for exposure to radio frequency (RF) energy set by the Federal Communications Commission of the U.S. Government. The exposure standard employs a unit of measurement known as the Specific Absorption Rate, or SAR. The SAR limit set by the FCC is 1.6 W/kg. Tests for SAR are conducted using standard operating positions accepted by the FCC with the EUT transmitting at the specified power level in different channels.

The FCC has granted an Equipment Authorization for this device with all reported SAR levels evaluated as in compliance with the FCC RF exposure guidelines. SAR information on this device is on file with the FCC and can be found under the Display Grant section of [www.fcc.gov/eo/ea/fccid](http://www.fcc.gov/eo/ea/fccid) after searching on FCC ID: ODM5G101