



SB-101

Quick Installation Guide

01 Introduction

Panic Button is an ideal device for elder or children who do not have a smartphone.

They can arm and disarm the home by pressing a button. When an accident happens they can push the panic button.

It can be connected by AirLive Z-wave Gateway or other Z-Wave. All non-battery operated nodes within the network will act as repeaters regardless of vendor to increase reliability of the network.

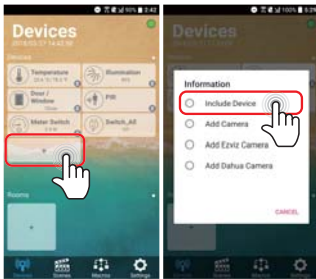
02 Include Panic Button -1

In the first time, power on and activate the device through micro USB. And hold down the central key, then press the top-right key three times within 1.5 seconds to enter the including mode.



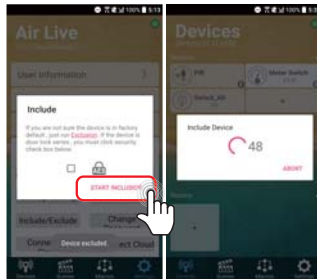
03 Include Panic Button -2

- Go to Devices page and click "+" icon.
- Press Include Device



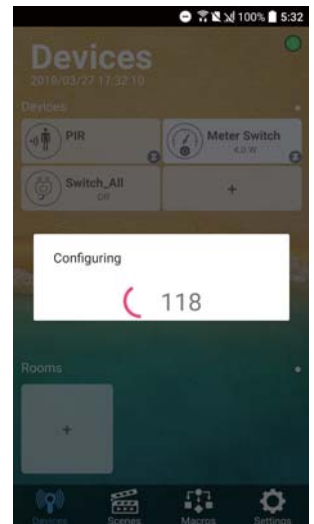
04 Include Panic Button -3

- Press "START INCLUSION"
- Start to include a device.



05 Include Panic Button -4

When the device is being included, APP will configure the setting into gateway.



06 Message Report

When the panic triggered, the device will report the trigger event and also report the battery status.

1. Panic Report: When the central key is held down over 2 seconds, the device will unsolicited to send the report to the nodes in the group 1.
2. Timing Report:
 - Battery level report: Every 6 hours report once in default.
 - Low battery report: When the battery level is too low, every 30 minutes will report once.

07 Function Control

Remote SB-101 can control AV device via Z-Wave-to-IR extender and lighting groups ON/OFF.

SB-101 has three keys on the device. The central one has panic function and the others are control keys.

1. AV Control: The left key controls Volume Up and the right key controls Volume Down.
2. Lighting Group Control: Only has one group-button which controls two lighting groups.
 - Left Key -- Lighting group 1 (Association group 2)
 - Right Key --Lighting group 2 (Association group 3)

08 Activate the power

The device can not work normally in the first time. Please activate the battery through micro USB before the first use. After the device is activated by connecting to micro USB, the device will start charging and LED will light on with red color. If the battery is full charged, LED will light on with green color.

When device is charging, it will send Wake Up Notification to controller minutely.

09 Battery Power Check

When any keys around the central key is pressed, the device will check the battery power. If the power level is too low, the red LED will flash once after pressing. Please charge the device through micro USB immediately.

10 Reset the Panic Button

1. Hold down the central key, then press the top-right key four times within 1.5 seconds and do not release the top-right key in the 4th pressed, and the LED will light ON.
2. After 3 seconds the LED will turn OFF, after that within 2 seconds, release the keys. If successful, the LED will light ON one second. Otherwise, the LED will flash once.
3. IDs are remove and all settings will reset to factory default.

Note: Always RESET a Z-Wave™ device before trying to add it to a Z-Wave™ network.

FCC Interference Statement

This equipment has been tested and found to comply with the limits for a Class B digital device, pursuant to Part 15 of the FCC Rules. These limits are designed to provide reasonable protection against harmful interference in a residential installation.

This equipment generates, uses and can radiate radio frequency energy and, if not installed and used in accordance with the instructions, may cause harmful interference to radio communications.

However, there is no guarantee that interference will not occur in a particular installation. If this equipment does cause harmful interference to radio or television reception, which can be determined by turning the equipment off and on, the user is encouraged to try to correct the interference by one of the following measures:

- Reorient or relocate the receiving antenna.
- Increase the separation between the equipment and receiver.
- Connect the equipment into an outlet on a circuit different from that to which the receiver is connected.
- Consult the dealer or an experienced radio/TV technician for help.

This device complies with Part 15 of the FCC Rules. Operation is subject to the following two conditions:
(1) This device may not cause harmful interference, and
(2) This device must accept any interference received, including interference that may cause undesired operation.

FCC Caution: Any changes or modifications not expressly approved by the party responsible for compliance could void the user's authority to operate this equipment. This transmitter must not be co-located or operating in conjunction with any other antenna or transmitter.

Warning

Do not dispose of electrical appliances as unsorted municipal waste, use separate collection facilities and manufactured not to exceed the emission limits for exposure to radio frequency (RF) energy set by the Federal Communications Commission of the U.S. Government.

If electrical appliances are disposed of in landfills or dumps, hazardous substances can leak into the groundwater and get into the food chain, damaging your health and well-being. When replacing old appliances with new ones, the retailer is legally obligated to take back your old appliance for disposal at least for free of charge.

RF Exposure Information (SAR)

This device meets the government's requirements for exposure to radio waves. This device is designed and manufactured not to exceed the emission limits for exposure to radio frequency (RF) energy set by the Federal Communications Commission of the U.S. Government. The exposure standard employs a unit of measurement known as the Specific Absorption Rate, or SAR. The SAR limit set by the FCC is 1.6 W/kg. Tests for SAR are conducted using standard operating positions accepted by the FCC with the EUT transmitting at the specified power level in different channels.

The FCC has granted an Equipment Authorization for this device with all reported SAR levels evaluated as in compliance with the FCC RF exposure guidelines. SAR information on this device is on file with the FCC and can be found under the Display Grant section of www.fcc.gov/eo/ea/fccid after searching on FCC ID: ODM5G101