

Quick Installation Guide

Contents

Chapter 1 Product Introduction.....	2
1.1 Package Contents.....	2
1.2 Product Features.....	2
1.3 Product Usage.....	2
1.4 Before Installation.....	3
1.5 Disable other manufacturers' wireless network adapters.....	3
1.6 Product Maintenance.....	4
Chapter 2 Installation Guide.....	4
2.1 Install the USB network adapter.....	4
2.2 Wireless Connection.....	6

Chapter 1 Product Introduction

Thank you for choosing our wireless adapter!

The wireless adapter supports IEEE wireless standards, and is able to quickly process file transfer, video, multi-media and other applications that require higher bandwidth.

This wireless adapter also integrates wireless configuration program, which makes it easy and quick to set up the wireless client. Besides, Soft AP is supported for fast wireless network establishment, and WPS encryption supported for you to quickly encrypt and secure your wireless network.

All in all, the wireless adapter is easy-to-use, and of robust signal, long transmitting distance.

1.1 Package Contents

- One Wireless network adapter
- One Software CD (includes user guide and driver)

The above list is for your reference only; the actual contents may differ according to the product you purchase.

1.2 Product Features

- Supports soft AP feature
- Detects wireless network and adjusts transmitting rate automatically
- Provides two working modes: Infrastructure and Ad-Hoc
- Supports WEP data encryption and WPA-PSK/WPA2-PSK encryption methods
- Supports WPS (Wi-Fi Protected Setup) encryption to secure your wireless network
- Complies with Windows 7/ 8/ 8.1/ 10, Linux, MAC OS, etc.

1.3 Product Usage

This Wireless Adapter offers a fast, reliable and extendable solution for wireless access.

It is mostly used in the following circumstances:

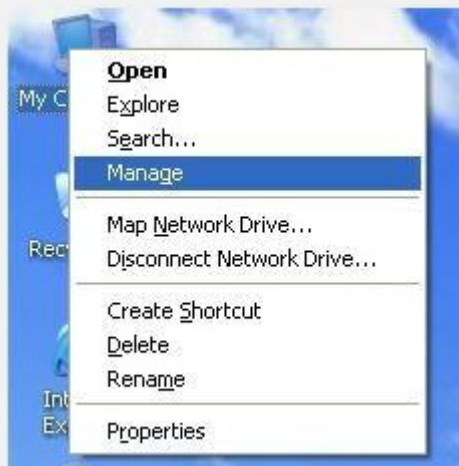
1. Enables staff members who require higher mobility, to have access to the wireless network anywhere inside their company.
2. Enables wireless communication for companies or places which are not suitable for wired LAN installation because of budget or building environment restrictions, such as historical buildings, rentals, or places for short-term usage.
3. Suitable for Enterprises or individuals requiring to regularly alter the networking topology
4. Helps enterprises or individuals who would like to use wireless to establish wireless network quickly and frees them from the trouble of cable distribution.

1.4 Before Installation

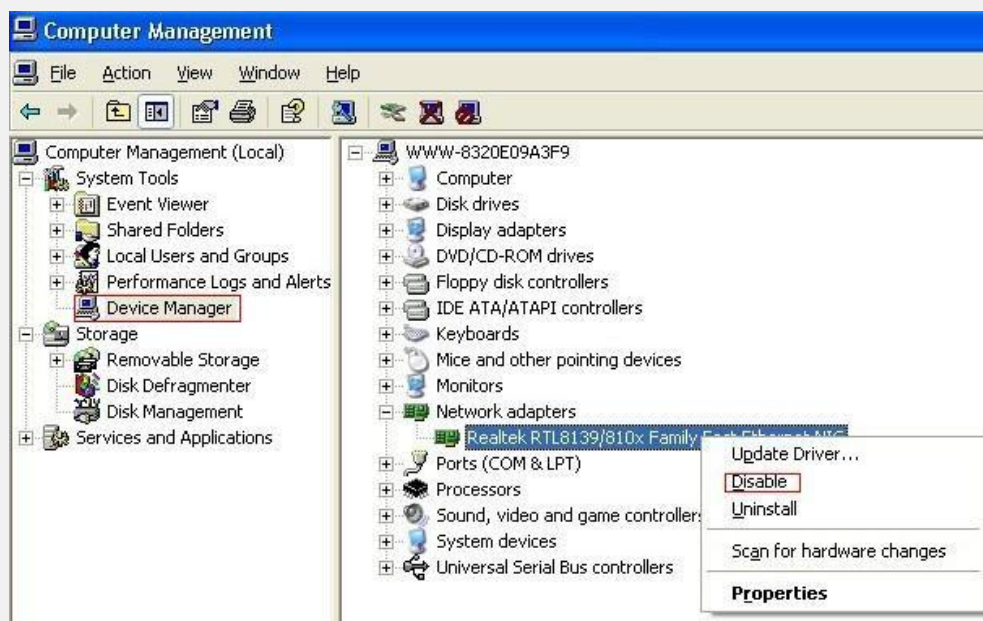
1. Please read through the whole user guide before you install and use this product.
2. Please close or uninstall the configuration programs of other manufacturers' before you install the configuration programs of the network adapters to avoid possible UI (user interface) conflict.
3. To avoid possible network conflicts between this the network adapter and those of other manufactures', we recommend that you first disable the network adapters of other manufacturers before installing the driver.

1.5 Disable other manufacturers' wireless network adapters

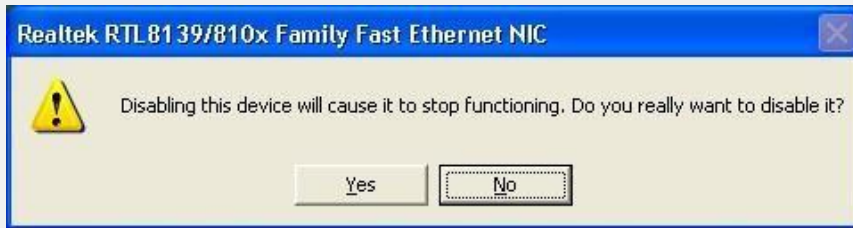
1. Right click "My Computer" and select "Manage"



2. On the Computer Management screen ,select "Device Manager" — "Network adapters", and right click the network adapter you want to disable and click "Disable"



3. Click the "Yes" button on the dialogue box to disable thenetwork adapter.



1.6 Product Maintenance

1. Please keep the product away from water and humid environment to guarantee its normal performance
2. Protect it against hazardous substances (such as acids, alkalis etc).
3. Please don't directly expose the adapter to the sunlight or excessive heat.
4. Please contact our tech support if any problems occur.

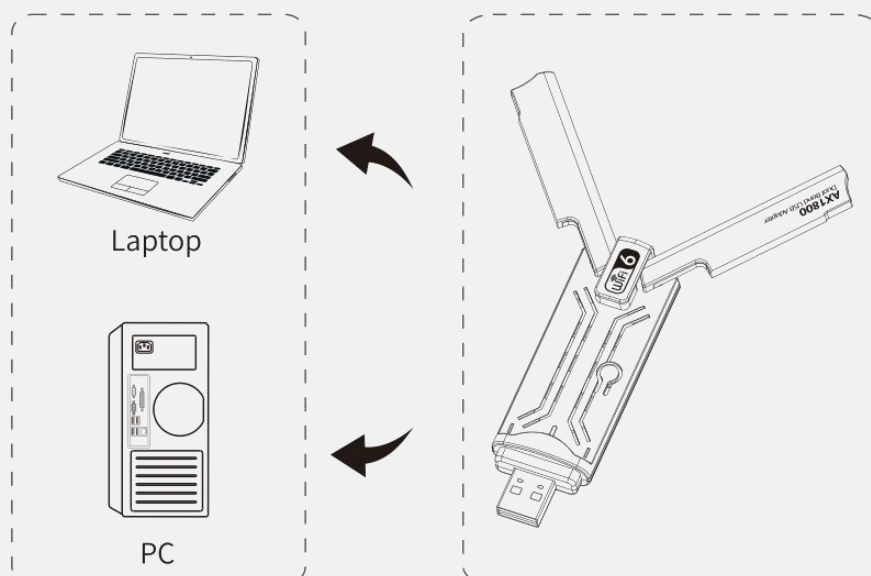
Chapter 2 Installation Guide

This chapter will guide you through the process of installing the network adapter software package, with the included software CD. The package integrates driver and configuration software. Thus, when you are installing the driver, the configuration software will be installed automatically as well.

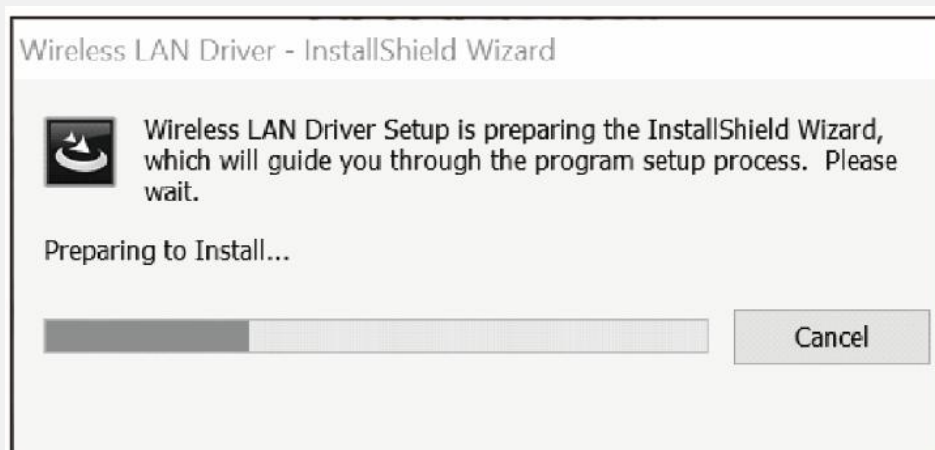
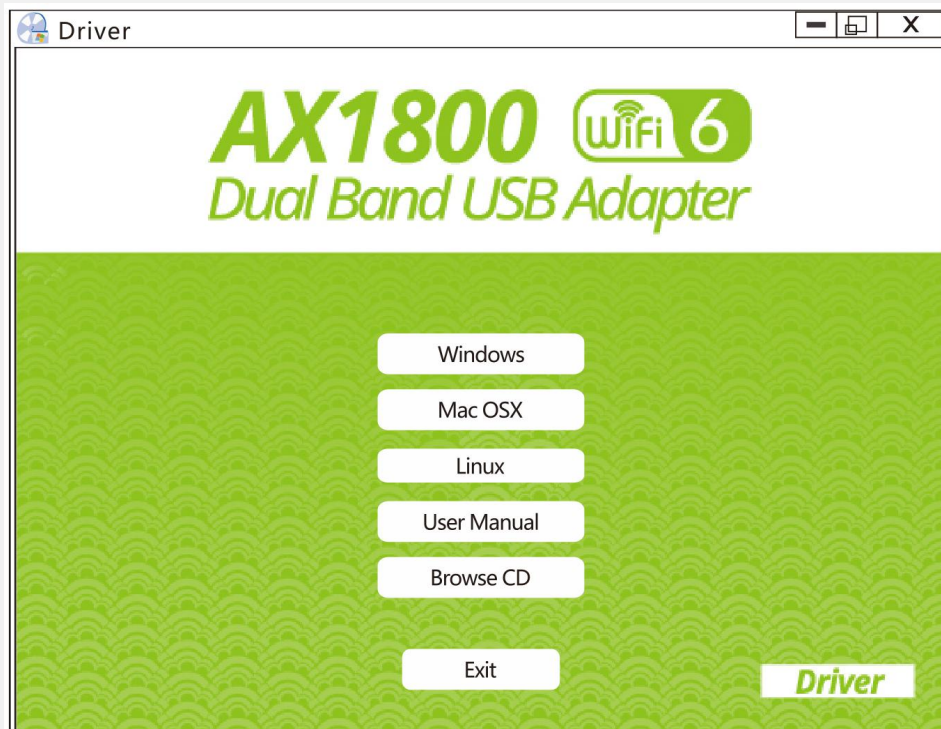
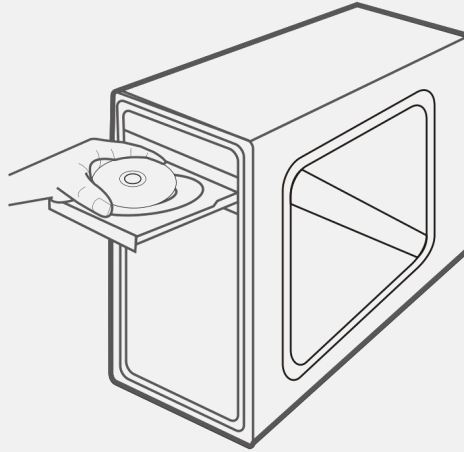
The software installation steps and operating guide in this user guide are explained under Windows XP, Installation steps for other operating systems are similar.

2.1 Install the USB network adapter

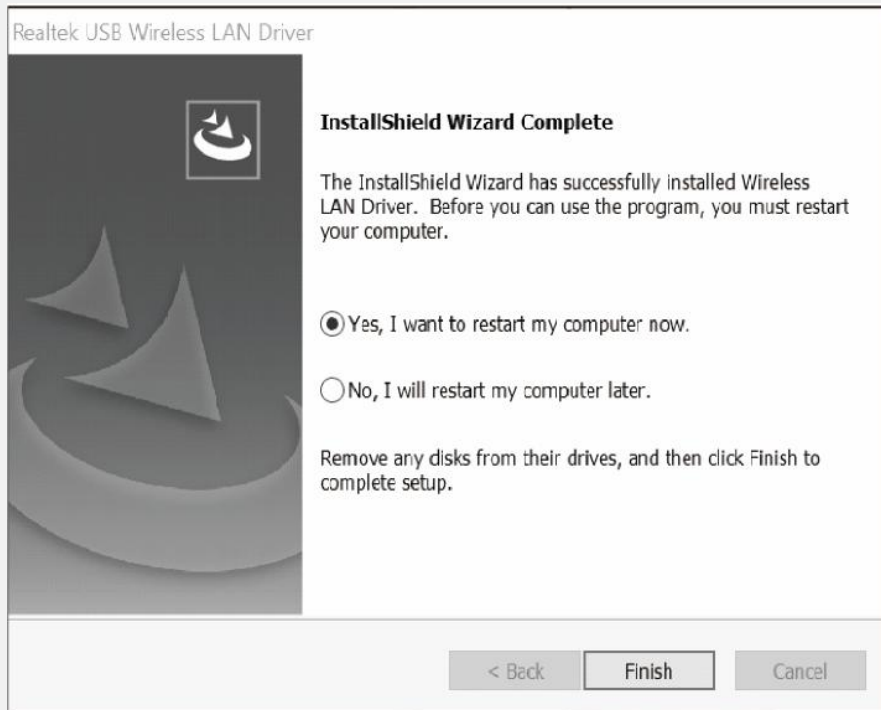
2.1.1 Please insert the Wireless USB Adapter into the USB port of your computer.



- 2.1.2 Put the software program CD, then auto installation window pops up on following. Just click **Windows**, the driver should run automatically. (Double click “**Setup.exe**” in the software CD and manually install when it doesn’t auto-run).

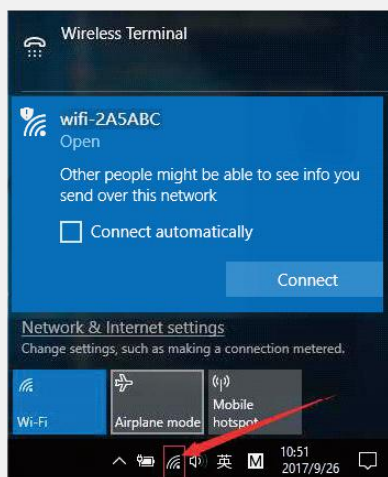


2.1.3 Click “Finish” to complete the installation.



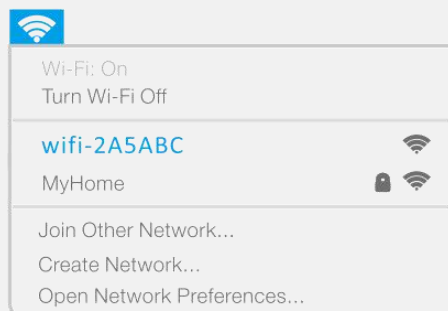
2.2 Wireless Connection

For Windows Users(Win 10)



1. Click on the Wi-Fi icon on the taskbar ;
2. Select SSID connection.

For MAC OS Users



1. Click the Wi-Fi icon in the top right corner of the screen;
2. Select SSID connection.